

# STRATODYNE FEATURED PRODUCT



**Aquifer Watermakers** offer an easy-to-use, lightweight, and portable way to purify water from virtually any water source. The Aquifer systems are built into rugged, military grade molded plastic cases that are engineered to survive the outdoor environment. The watermakers in the Aquifer can provide up to 15 gallons/hour of purified water from salty, brackish, or fresh water.

The Aquifer series is ideal for emergencies, disaster relief, expeditions, military, and recreation. These units are built using the revolutionary and proprietary Clark Pump, a high pressure intensifier that makes the watermaker so energy efficient that they are easily powered by solar panels. Aquifers are available in 12v DC and come with a product flow meter, pressure gauge and a hand-held salinity monitor.

#### Features Include:

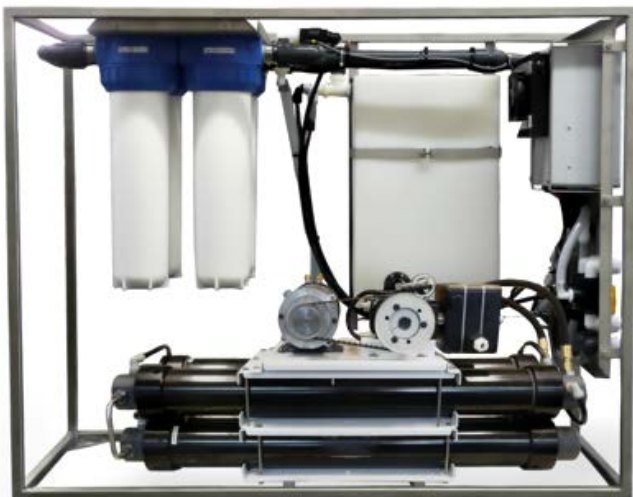
- Simple analog controls and gauges, no electronics.
- Super efficient requiring as little as 110 watts to purify seawater, perfect for solar and wind power.
- Heavy duty, military grade, shock and impact resistant plastic roller case.
- Composite construction for superb corrosion resistance.
- Commercial grade diaphragm pumps with run-dry protection.
- Ships complete with everything you need to make pure water.
- Fixed system recovery for easy operation and long service life.
- World renowned customer service and support, with real technicians available by Skype, phone and email.



Aquifer 200 Power Pack Solar

AQUIFER SYSTEMS	WATER PRODUCTION		VOLTAGES AVAILABLE			WEIGHT	
	GALLONS/DAY	LITERS/DAY	WATTS	12VDC	110-240V AC	WEIGHT/LBS.	SHIPPING WT./LBS.
AF-200-DC	200	757	120	✓		75	85
AF-360-DC	360	1,350	240	✓		96	110
AF-200-EX-24	200	757	120			75	85
AF-200-PPS	200	757	120	✓	✓	135	145

\*\*\* AF-200-PPS System Features Solar Charger, AC Charger, & Battery Power System \*\*\*



LB-4000-F

The stationary **Land Based Watermakers** are available in many configurations to suit your needs. The LB 400 and 800 are both simple analog and modular systems. The LB 1800, 2800, and 4000 series come in different configurations, modular (M) systems have separate components that allow for flexible installation and frame (F) systems are contained within a rugged 304 powder coated stainless steel frame. The LB 10,000 comes standard in the frame. Frame based systems have the option of adding the MPC 5000 remote controller.

#### Smaller System Features Include:

- Simple analog controls and gauges, no electronics.
- Super efficient requiring typically minimal wattage to purify seawater, perfect for solar and wind power.
- Compact modules are easy to install and the single feed pump (not included) simplifies installation
- Composite construction for superb corrosion resistance.
- Fixed system recovery for easy operation and long service life.

#### Larger System Features Include:

- Choice between simple analog controls and gauges or complete automation with the MPC 5000 remote controller
- Super efficient requiring typically less than 3.5 kilowatts to purify seawater, including feed pump, perfect for solar and wind power.
- Soft-start Lentz AC Tech speed controls means the system will never draw more than the rated power, no start-up spike.
- Rugged, powder coated 304 stainless steel frame
- Composite construction for superb corrosion resistance.
- Fixed system recovery for easy operation and long service life.

LB SYSTEMS	LB-400	LB-800	LB-1800M	LB-1800F	LB-2800M	LB-2800F	LB-4000M	LB-4000F	LB-10,000
GALLONS/LITER PER DAY	400/1,514	4,800/3,030	1,800/6,810	1,800/6,810	2,800/10,600	2,800/10,600	4,000/15,141	4,000/15,141	10,000/37,854
DC/AC VOLTAGES AVAILABLE	24,48/110,220	24,48/110,220	208-204V AC	208-204V AC	208-204V AC	208-204V AC	208-204V AC	208-204V AC	220V AC
WEIGHT	76	140	315	425	365	475	400	450	1,600
PUMP & MOTOR TYPE	N/A	SPECTRA CLARK	SPECTRA PEARSON	SPECTRA PEARSON	SPECTRA PEARSON	SPECTRA PEARSON	SPECTRA PEARSON	SPECTRA PEARSON	SPECTRA PEARSON

# MOBILE APPLICATION SOLUTIONS & EQUIPMENT

(INCLUDING, BUT NOT LIMITED TO):

Power Generation

Scene Lighting

Medical/Preparedness Supplies & Storage

Decontamination

Gas Generation (Medical & Industrial)

Gas Storage & Distribution

HAZMAT

Mobile Command Centers

Water Purification & Supply

HVAC

Shelters & Shelter Storage

Pet Emergency



CONTACT A STRATODYNE  
REPRESENTATIVE TODAY TO DISCUSS  
YOUR AGENCY'S NEED FOR A  
MOBILE SOLUTION!



## STRATODYNE OPTIONS & ACCESSORIES FOR MOBILE APPLICATIONS

LED EXTERIOR LIGHTING OPTIONS



CLIMATE & AIR QUALITY CONTROLLING VENTS



ROOFTOP AIR CONDITIONING & HEATERS



WEATHERPROOF INLET/OUTLET PORTS



GAS ROD POWERED EXHAUST VENTING



OPTIONAL RAMPS & AUTOMATIC LIFTGATES FOR HEAVY LOADING



STABILIZING SCISSOR JACKS



RADIAL TIRES & SAFE-T-LUBED AXELS FOR EVENWEAR & LONGER LIFE EXPECTANCY



EXTRA REINFORCED STEEL FRAMING FOR IMPROVED DURABILITY & STRENGTH





**CONTACT A STRATODYNE REPRESENTATIVE TODAY TO DISCUSS YOUR MOBILITY NEEDS**

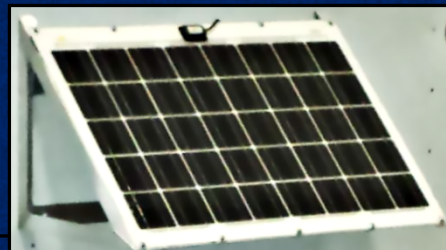
RETRACTABLE OUTDOOR AWNINGS & SHELTERS TO  
PROVIDE SHADE AND RELIEF FROM INCLIMATE WEATHER



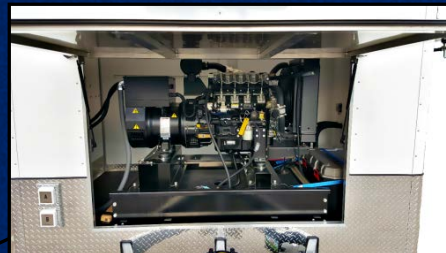
CUSTOM EXHAUST SYSTEMS  
FOR INDOOR EQUIPMENT



INTEGRATED SOLAR PANELS FOR MOBILE  
POWER WHEN AND WHERE YOU NEED IT



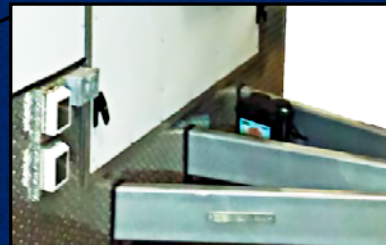
KEYED PORTS FOR EASY ACCESS AND  
SERVICING OF INTERIOR EQUIPMENT



ELECTRIC  
TONGUE JACKS



EXTENDED 3-PIECE A-FRAME



EQUAL-I-ZERO® 4-POINT SWAY HITCH FOR WEIGHT  
DISTRIBUTION & TRANSPORT CONTROL



WEATHERPROOF ELECTRICAL EQUIPMENT & OPTIONS FOR  
RELIABLE SHORE POWER CONNECTIONS





**STRATODYNE'S ENCLOSED CARGO TRAILERS**

At Stratodyne, we pride ourselves on being able to provide one of a kind solutions suited to our customer's exact needs. Regardless of your application or specifications, we will work with you to ensure a finished product that is designed to exceed expectations.

When it comes to our trailers, we refuse to provide anything less than the highest quality materials and construction to ensure dependability, functionality, and most importantly; customer safety and reliability.

Some of the additional options that set our custom mobile trailers above the rest include:

- Heavy Duty Reinforced Frames
- Back-up Braking Systems
- Rust Resistant Coatings
- Recessed Exterior Lighting for Added Protection
- Weather Resistant Solar Panels to Provide Power to Trailer or Included Equipment
- Customized Walking or Equipment Loading Ramps Made to Meet Your Specific Needs
- Unique Mounting System to Fully Ensure That All Included Equipment is Safely Secured
- Heating & Air Conditioning Options for Ideal Temperature Control in Any Climate
- Gas Rod Powered Access & Exhaust Panels to Allow for Easy Equipment Maintenance
- Interior/Exterior Electrical Hidden Within the Trailer Walls. Wired to Meet your Needs and to Match Your Facility's Supply.
- Many, Many, More Available Options and Upgrades to Choose From! Please See the Previous Pages for Examples of Our Additional Advantages!!

**CONTACT A STRATODYNE REPRESENTATIVE TODAY TO DISCUSS YOUR OPERATION'S NEEDS FOR A MOBILE SOLUTION TODAY. WE ARE HAPPY TO ASSIST WITH MAKING YOUR POTENTIAL PROJECT BECOME A REALITY.**

